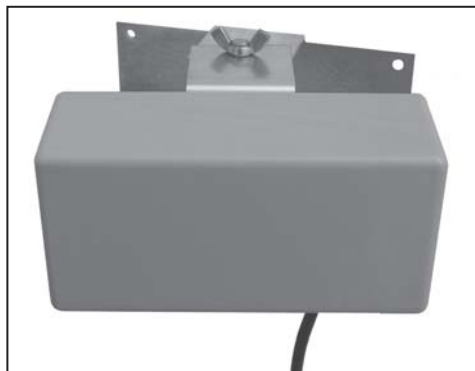


WADE ANTENNA LTD.



2.4 GHz Indoor Panel Antennas:

P150-2.4

IDEAL FOR 'HOT SPOTS' !

DESCRIPTION

The Indoor Panel antenna is discrete and suitable for most buildings and rooms. The short pigtail allows for easy installation. Available in grey. Suitable for outdoors.

APPLICATION

Indoor antenna for large conference room, classroom, airports, or open area.

105° beam width will allow for multiple units to connect to the network.

SPECIFICATIONS

ELECTRICAL

MODEL	P150-2.4
FREQUENCY	2400 MHz \pm 2%
GAIN	6 dBi
IMPEDANCE	50 Ohm
VSWR	1.5:1
F/B RATIO	20 dB
POLARIZATION	VERTICAL
HPBW "E" PLANE	65 DEGREES
"H" PLANE	105 DEGREES
CROSS POL REJECTION	> 20 dB
TERMINAL TYPE	N FEMALE
MAXIMUM INPUT POWER	30 WATTS
WIND AREA (SQ. FT)	0.08

MECHANICAL

RADOME	ABS, GREY
SIZE (L x W x D)	6.0" x 2.4" x 1.7"
WEIGHT	0.5 LBS (0.2 KG)
MOUNTING	WALL

Wade Antenna's ongoing policy of continuing development may result in specification changes to its products.